

4通倍器試作 (1120MHz--->4480MHz)

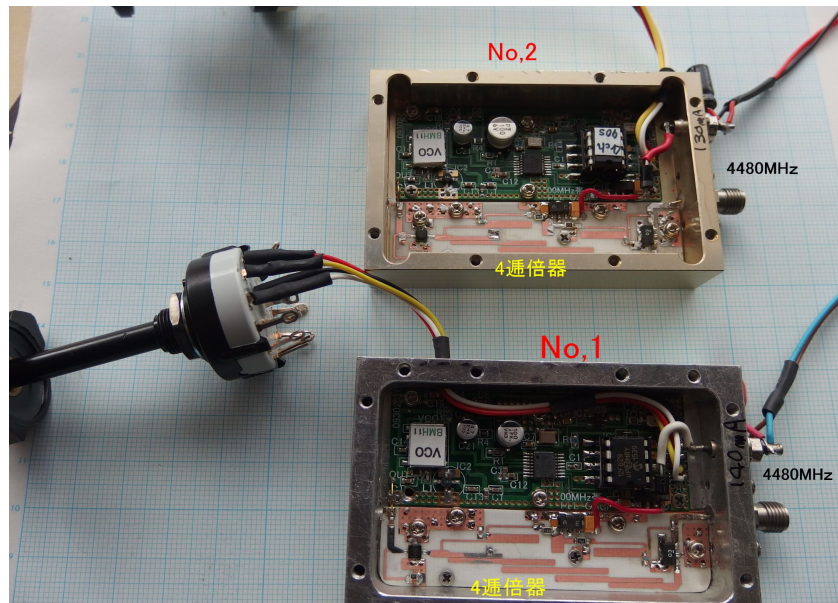
(PLL-Pic 4チャンネル)

1ch: 4470MHz
(1117.5MHz)

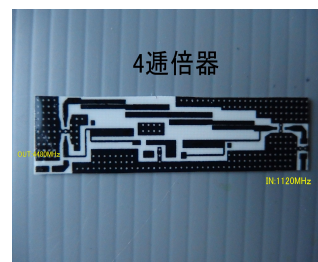
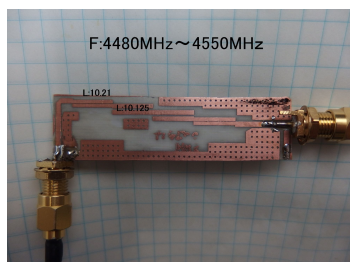
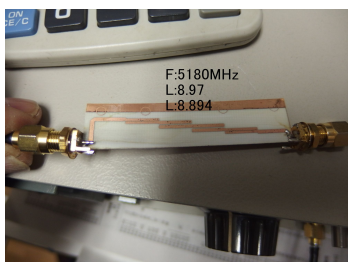
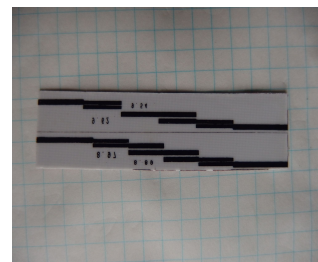
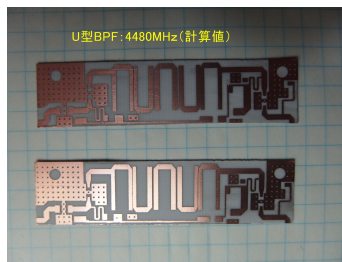
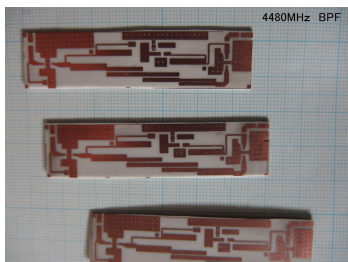
2ch: 4475MHz
(1118.75MHz)

3ch: 4480MHz
(1120MHz)

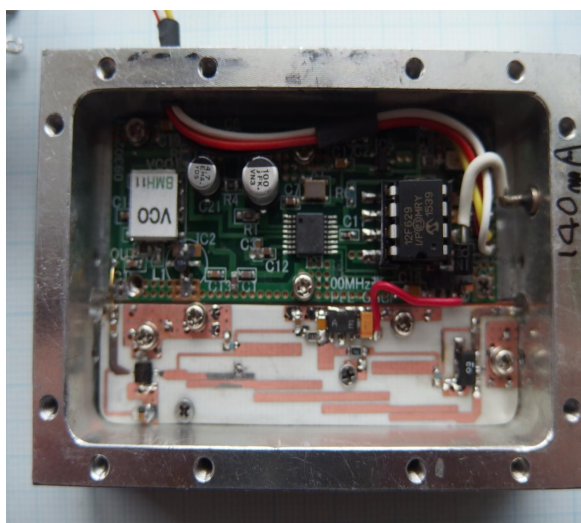
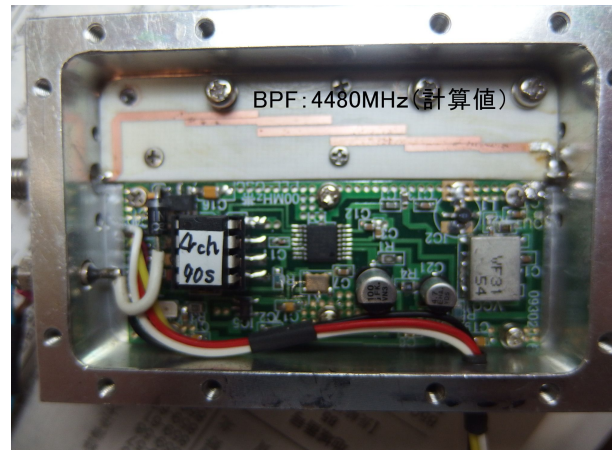
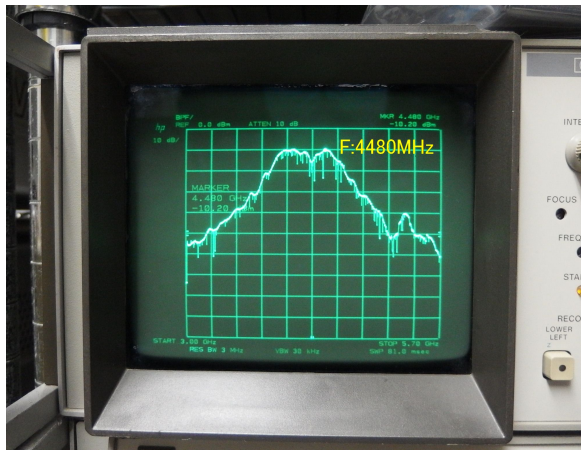
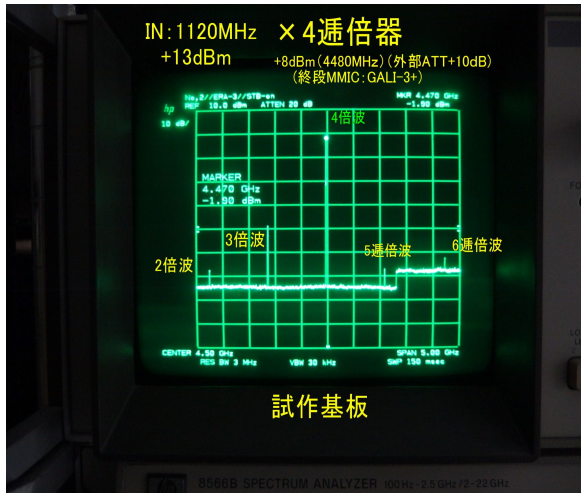
4ch: 4490MHz
(1122.5MHz)



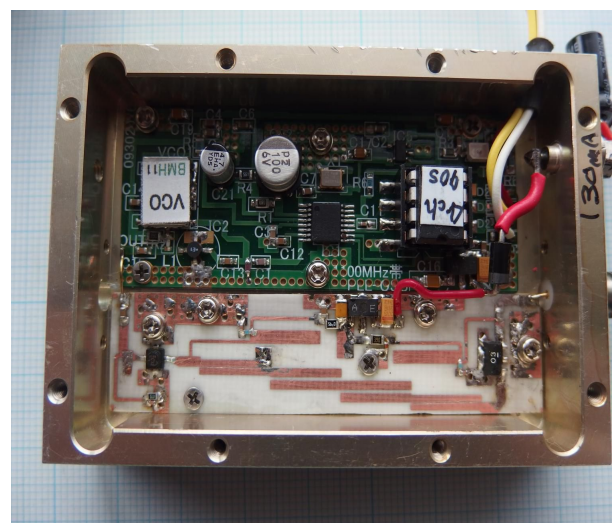
4000MHz ~ 4500MHz BPF試作



4通倍器試作基板 OUT:±8dBm (外部ATT10dB付測定)終段MMIC・・・GALI-3 +



No,1



No,2